

شركة الجابر للتجارة و المقاولات ذ.م.م
Al Jaber Trading & Contracting Co. W.L.L.



BUILDING THE CITY OF THE FUTURE

Certified by:



Member of:







**Al Jaber Trading &
Contracting Co. W.L.L.**

- INTRO
- ABOUT US
- CULTURAL CENTERS
- TRANSPORTATION
TERMINALS
- MARINE WORKS
- HOTELS AND MIXED
USE DEVELOPMENT
- HIGH RISE BUILDING
PROJECTS
- MEDICAL FACILITIES
- SPORTS ARENA
PROJECTS
- RESIDENTIAL AND
HOUSING PROJECTS
- EDUCATIONAL
INSTITUTION PROJECTS
- EPIC PROJECTS
- INFRASTRUCTURE AND ROAD
PROJECTS
- HISTORICAL PALACES
RESTORATIONS
- PLANT MOTOR & VEHICLE DEPT. (PMV)
HEAVY FLEET EQUIPMENTS & TRUCKS
- JTC STAFF ACCOMMODATION &
CAMPS
- JTC COMMITMENT TO
CONTINUAL IMPROVEMENT
- SUSTAINABILITY
- JTC CERTIFICATIONS
- JTC CLIENTS &
TOP MANAGEMENT

Al Jaber Tower Building No. 50 Al Muthaf , Street 137 , Old Salata , P.O. Box 1120 Doha , Qatar
Website: www.jtc-qa.com Tel. No.: (+974)4409-8181 Email: info@jtc-qa.com Fax No. : (+974)4432-3168

AL JABER TRADING AND CONTRACTING CO.

CREATES OPPORTUNITIES FOR INVESTMENT AND
MAKES YOUR DREAMS COME TRUE

JTC actively nurtures a culture of cooperation to ensure strong and enduring relationships with its clients, subcontractors, suppliers and partners to undertake all aspects of construction for best practice and better performance. This includes overall construction management, preliminary investigations, feasibility studies, project cost estimating, scheduling, tendering, pre-construction services, procurement, quality management, monitoring and control, site preparation, excavation,

construction equipment supply, tool supply, insulation, waterproofing and maintenance. JTC has developed an integrated management systems (QHSE) that meet the requirements of Quality (9001:2015), Health and Safety (18001:2007), and Environment (14001:2015) standards, that aim to satisfy the needs and requirements of its customers and above all continually improve the company's management system.

AL JABER GROUP COMPANIES

AL JABER GREEN CONSTRUCTION
AL JABER POWER TECHNOLOGY
AL JABER SHIPPING & CUSTOM CLEARANCE
AL JABER SWIMMING POOLS
AL-FARRAJ ELECTRICALS
AL-FEROZ INTERNATIONAL
ALFY MARBLE
JH CONSTRUCTION W.L.L.
AL-JABER BROTHERS
AL-JABER DECORATION WORKS
AL-JABER ELECTRO MECHANICAL CO.
AL-JABER ENGINEERING CO.
AL-JABER GARAGE CO.
AL-JABER GEOTECHNICAL CO.
AL-JABER GROUP BAHRAIN
AL-JABER HOLDING CO.
AL-JABER INFRASTRUCTURE CO.
AL-JABER STEEL CO.
AL-JABER TRADING & CONTRACTING CO.
AL-JABER TRANSPORTATION & HEAVY EQUIPMENT (JTH) CO.
AL-JABER TRAVELS, TOURS AND CARGO
AL-SAFA MEDICAL POLY CLINIC
AL-WATANIYA CONCRETE
ARABIAN PROJECTS DEVELOPMENT CO.
ARABIAN SPECIALIZED MATERIALS CO.
ARABIAN TECHNICAL SERVICES CO.
BITMODE QATAR FOR INSULATION MATERIALS
CALLIPER QATAR
CENTURY HOTEL
CONFIDENCE EQUIPMENT & TRANSPORT
EMEDIANET QATAR
EVERBRITE SHIPPING & LOGISTICS SERVICES
EXPANDED METAL MANUFACTURING CO.
EXTRA FIBER GLASS
FATHIMA HEALTHCARE MANAGEMENT SERVICES
HYDRO PLATFORM INC QATAR
INTERNATIONAL ENGINEERING & GENERAL CONTRACTING
INTERNATIONAL MEDICAL CO.
INTERNATIONAL STAINLESS STEEL
INTERNATIONAL TECHNOLOGY SERVICES
JAPCO (AL-JABER PLANT CO.)
JEFFERSON INTERNATIONAL FOR TRADING & CONTRACTING
JEWELLERY KINGDOM
KINGSTONE DECOR
KINGSTONE PREMIX DRY GRC
MAMCO GENERAL CONTRACTING
ORIENT MARINE SERVICES
PANORAMA CONTRACTING & ENGINEERING
QATAR CONSULTING COMPANY (QCC)
QATAR CRYO (INDUSTRIAL GASES FACTORY)
QATAR GRC COMPANY
QATAR GYPSUM PRODUCTS INDUSTRY (QGIPS)
QATAR INTERNATIONAL TECHNOLOGY (QIT)
QATAR LEASE
QATAR PLASTIC ADDITIVES (QADCO)
SHUTDOWN MAINTENANCE SERVICES
THE LEBANESE PALACE
UNICON LIMITED
UNITED TELECOMMUNICATION
URBAN CONCEPT FOR DESIGN
ZAJEL TELECOMMUNICATIONS

**AL JABER TRADING
& CONTRACTING CO. W.L.L.**
MAIN OFFICE

AL JABER
OFFICE TOWER HEADQUARTERS



**Al Jaber Trading &
Contracting Co. W.L.L.**

BUILDING THE CITY OF THE FUTURE

Al Jaber Top Management cope with today's modern technology, committed to adopted system, policy and continual improvement of its ISO Integrated Management System, therefore the company leaders have marked words to support their corporate vision and strategic plan.



Corporate founder's strong Message:

"JTC is committed to build the future city of Qatar with the latest modern building structure and technology, rich in quality, safety and environment towards its staff, people and the land"
The Late Mr. Sultan M. Aljaber, JTC Founder.



"JTC is committed into becoming the benchmark in the construction industry, measured with the quality of work, professional managers and skilled workforce." **Eng. Mohammed Sultan Aljaber, Al Jaber Group Chairman.**



"JTC looks after its workforce with care in terms of health, safety and a clean environment." **Mr. Jaber Sultan Aljaber, Al Jaber Group Vice Chairman, Administration**



"JTC remains devoted to its philosophy and belief in building high quality projects in an ethical manner with fair profit, thus developing mutual beneficial partnerships with its customers and clients." **Eng. Salah Sultan Aljaber - JTC CEO / Al Jaber Group Vice Chairman, Finance and Business Development.**



"JTC is committed to customer satisfaction by understanding customer's needs, requirements and expectations"
The Late Mr. Zeyad Abu Ajina, JTC Managing Director.

JTC is a building contractor that develops a safe and environmental friendly construction facilities, which aims to achieve company vision and objectives, meet customer expectations, formulate corrective and preventive actions, and comply with the ISO standards of the integrated management system.

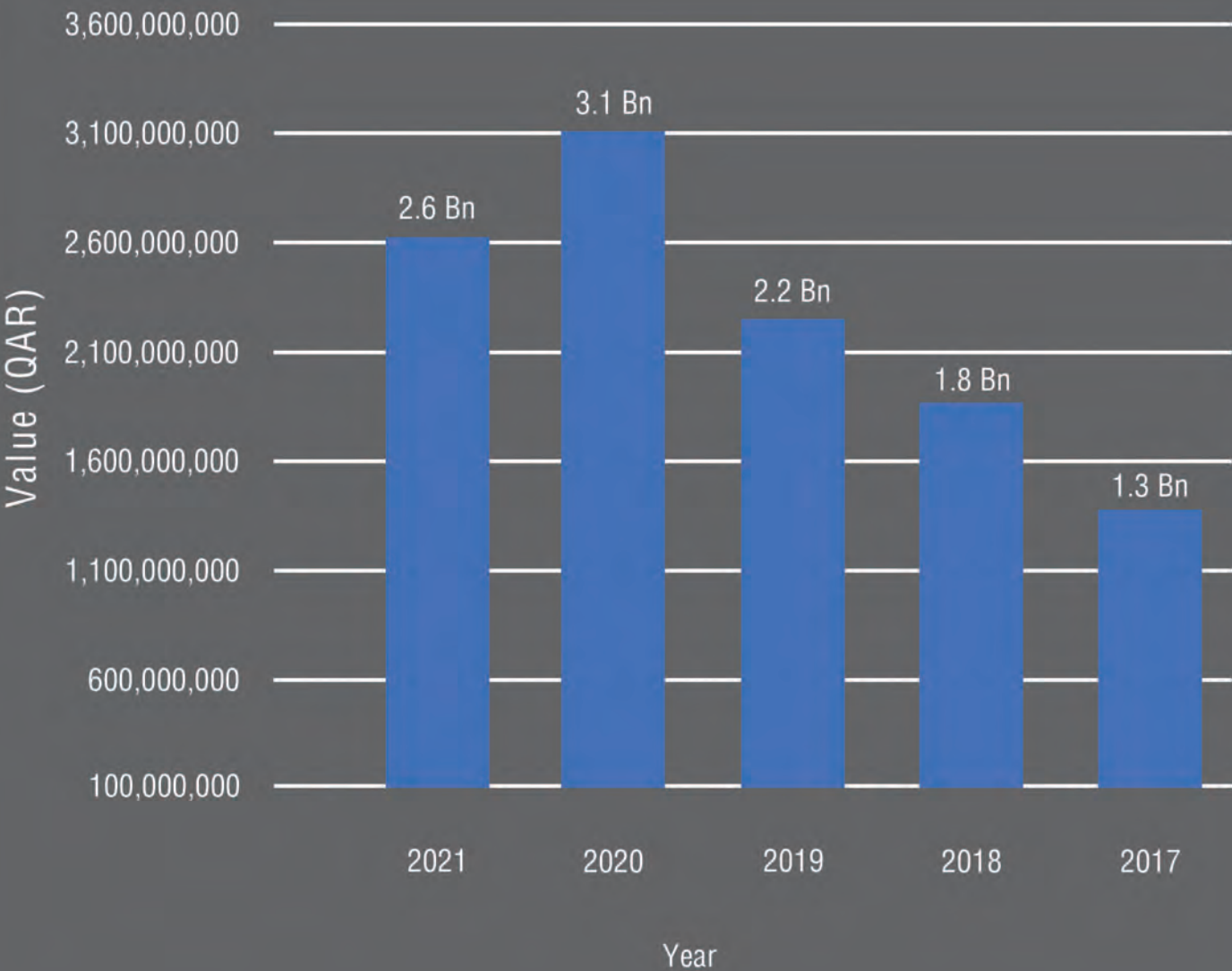


Quick facts about JTC

Year of Establishment	1976
Business Sector	Construction - Main Contractor
Contractor Classification	Grade - A
Portion of Sales - Building Projects	75%
Portion of Sales - Infrastructure & Marine Projects	25%
Staff / Labors including JTC's Managed Affiliates	4500 personnel
Own Plant & Equipment	454 Equipment

JTC's Ongoing Projects for Last 5 Years - Total Yearly Value

ABOUT US





**Al Jaber Trading &
Contracting Co. W.L.L.**

General Manager's Message



Engr. Mohammed Al Hamayda
General Manager

With vast years of experience in the contracting and construction industry, JTC has become a pioneer in its profession, taking pride in putting our customers and clients as our top priority by carefully understanding their needs and requirements and by fulfilling them with utmost care and excellent quality.

JTC is committed to develop and build projects that aim to a higher quality and growth with the dedication to protect the environment and to make sure that the health and safety of our staff, employees, and everyone involved is always taken into consideration. JTC seeks excellence in modernizing the construction industry by being the benchmark in which top construction and contracting companies are measured.

Today, as our business grows, we remain committed to our philosophy and belief in building high quality projects, from conception to delivery, that complies with the highest international standards, providing contracting services in an ethical manner with fair profit, and developing mutual beneficial partnerships.

Mission

JTC is in business to construct and build new infrastructure facilities from conception to delivery and beyond, provide contracting services in an ethical manner, committed to understanding and fulfilling customer requirements and needs.

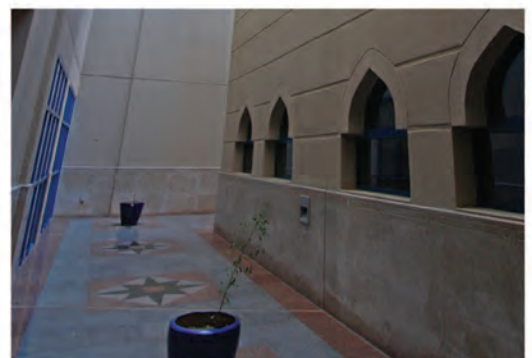
Vision

JTC seeks excellence in revolutionizing the construction industry by achieving world class standard in quality, environment, health and safety and adopting international best-in class leading practices aiming for high quality of its products and services that are significantly above current industry standards.

FANAR QATAR ISLAMIC CULTURAL CENTRE

BRIEF DESCRIPTION:

JTC is proud to present one of the most prominent and everlasting iconic building in the history of Qatar. A building centre dedicated to the islamic culture that consist of basement, Ground Floor and Eight Floors



CLIENT:

Ministry of Awqaf & Islamic Affairs

CONSULTANT:

GHD

PROJECT DURATION:

18 Months

YEAR COMPLETED:

2005



JTC is committed in providing quality construction services and products through fulfilling the Integrated Management System that covers three ISO standards, Quality Management System (ISO 9001:2015), Health & Safety Management System (OHSAS 18001:2007) and Environmental Management System (ISO 14001:2015).



DESIGN AND BUILD OF HAMAD PORT PROJECT VISITORS CENTRE (NPP / 0065)

CLIENT:

Hamad Port Steering Committee

CONSULTANT:

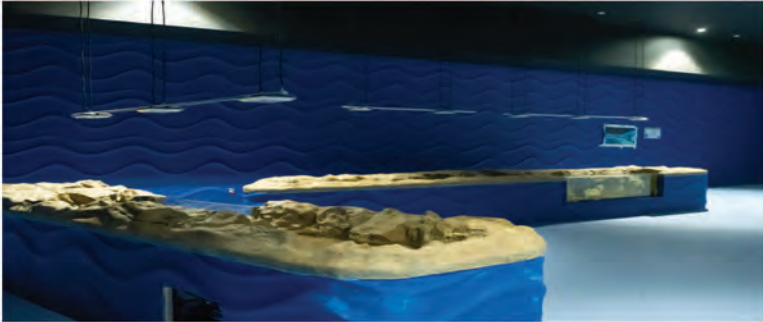
Worley Parson / Royal Haskoning DHV

PROJECT DURATION:

27 months

YEAR OF COMPLETION:

2019



CULTURAL CENTERS



**BEST LOW RISE CONCRETE BUILDING
IN THE WORLD IN 2019**



BRIEF DESCRIPTION:

The New Port visitors centre is very unique in design and is located at the Port Administration Area, New Port Project Site, Mesaieed. JTC is responsible for the design and build of the project and has commenced the work from January 2017.

The purpose of this building is to provide information and knowledge to Port visitors and to provide accommodation for Educational activities related to the Port operations, Port construction and the **history of maritime activities in Qatar**.

The Visitors Center is going to be iconic and most unique one of its kind when built due to the eminent features such as; an **Aquarium extended to sea**, **Exhibit / Museum**, and an **Auditorium**. It also aiming to achieve a **Global Sustainability Assessment System (GSAS) 4-star rating**.

BUILD WITH QUALITY & EXCELLENCE



DOHA PORT RE-DEVELOPMENT PROJECTS

DESIGN & BUILD OF GRAND TERMINAL

CLIENT:

Supreme Committee for Delivery
& Legacy

CONSULTANT:

DAR

PROJECT DURATION:

15 Months

YEAR OF COMPLETION:

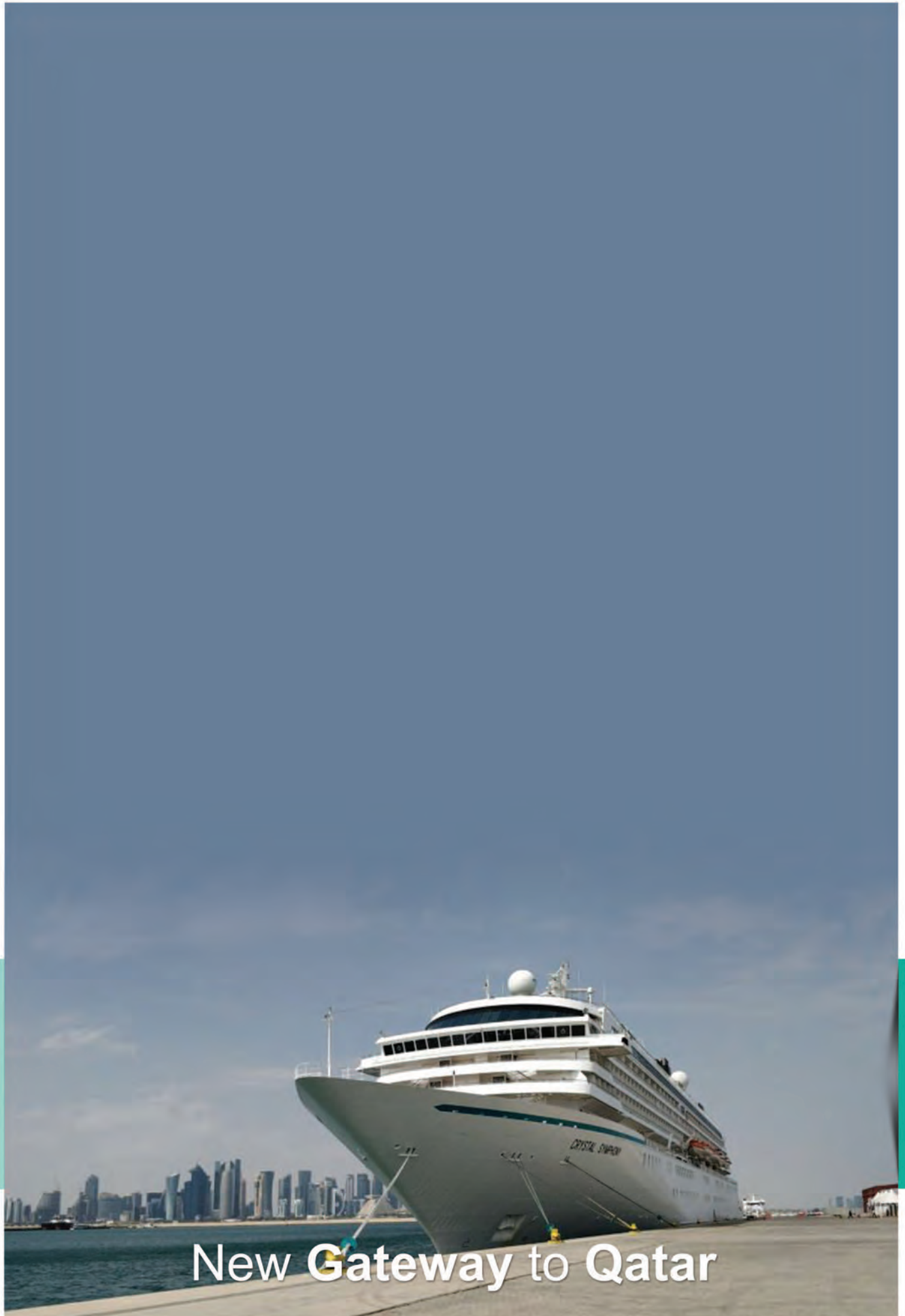
2021



TRANSPORTATION TERMINALS

BRIEF DESCRIPTION:

- The Grand Terminal is a rectangular two-floor building comprising of two twin terminals over two levels. It includes a city gallery, an aquarium and parking facilities.
- The Project is located at the port area of Doha to the north of the South Eastern District.
- Total Built-up Area = 24,400 m²
- Scope of Works includes:
 - Design (CD, SD, DD, BOQ)
 - Engineer, execute, remedying defects



New Gateway to Qatar

AIRLINE OPERATION BUILDING & FACILITIES (Qatar Airways Crew Terminal)

CLIENT:

New Doha International Airport
Steering Committee

CONSULTANT:

Overseas Bechtel Incorporated (OBI)

PROJECT DURATION:

48 Months

YEAR COMPLETED:

2014



TRANSPORTATION TERMINALS

**BRIEF DESCRIPTION:**

The Scope of Work consists of, procurement, construction, start-up and commissioning of all elements of **Airline Operations Facility for the New Doha International Airport (NDIA)** which serves as **Terminal & Offices for Qatar Airways Staff & Crew**. AOF is a two-storey building containing processing areas for arrival and departure of flight / cabin crews, an airline operations control center and offices for airline management staff.



Our **History** is The Asset of Our **Future**

DESIGN AND BUILD OF SOUTH MARINA YACHT CLUB



CLIENT:
Lusail Real Estate Development Company
(LREDC)
CONSULTANT:
Dorsh Qatar
PROJECT DURATION:
18 months
YEAR COMPLETED:
2017

MARINE WORKS

International Award of Excellence in Concrete Construction by ACI - Year 2018



Qatar Sustainability Awards 2016



BRIEF DESCRIPTION:

The Marina Yacht Club is situated at the Lusail city and very unique in nature which has turned to be another landmark structure in the industrial map of Qatar. It is very prestigious and relaxed, pleasant and efficient, exclusive and welcoming two story building highly visible from the promenade that develops on three sides of the marina.

The sculpted roof curve of the Marina Yacht Club emerges from the promenade horizontal and curls dynamically to offer a signature skyline to the marine. Rather than being mimetic with yachts, the design takes its inspiration from those concepts associated to yachting; movement and aero/ hydro-dynamism. The project was a joint-venture with Ceinsa Construction W.L.L. **The building achieved 4-Star rating in Assessment System (GSAS).**

Best concrete construction in Qatar and awarded **second place in the international competition** organized by **American Concrete (ACI)** for the year 2018.

Winner of Qatar Sustainability Week Awards in 2016.



JTC BUILT TO ATTAIN SUSTAINABILITY

DOHA PORT RE-DEVELOPMENT PROJECTS

Construction of Sports
Marina and Container Park Works

CLIENT:

Supreme Committee for Delivery
& Legacy

CONSULTANT:

ASTAD

PROJECT DURATION:

11.8 Months

YEAR COMPLETED:

2019



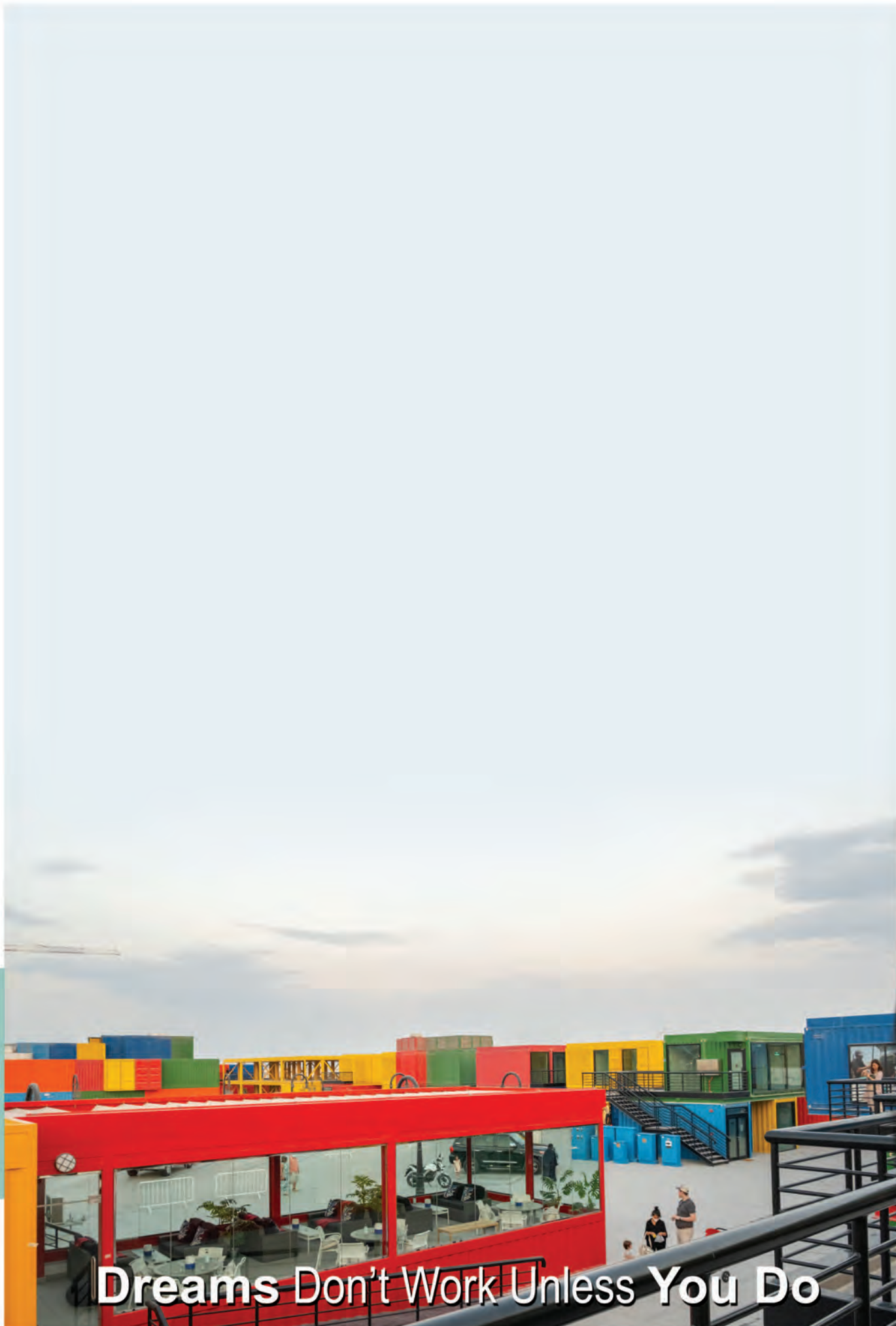
MARINE WORKS

**BRIEF DESCRIPTION:**

The Sports Marina District is an energetic and youthful destination for water sports at Doha Port.

The Supreme Committee for Delivery & Legacy (SC) has selected and appointed Al Jaber Trading and Contracting Co. WLL to carry out in fulfilling this challenging yet captivating new landmark in the heart of Doha.

Water sports enthusiasts may hire a sail-boat, Jet-ski, or take sailing lessons at the club, which is housed within a container structure. Within the container Park, cafes and equipment stores provide the setting for a lively marina atmosphere. A boat yard offers amateurs and connoisseurs with an opportunity to purchase or service their boats.



Dreams Don't Work Unless You Do

QETAIFAN ISLAND NORTH AT LUSAIL PHASE 1

Main Works Package 2A, Marine Works (Icon Island, Beaches & Canal Entrance)

CLIENT:

M/S Qetaifan Projects LLC

CONSULTANT:

ATKINS

PROJECT DURATION:

6 Months

YEAR OF COMPLETION:

2019



MARINE WORKS



BRIEF DESCRIPTION:

The Project consist of the following:

- i. Icon Island
- ii. Beaches – 4 nos. (Beach 14,15,16,17)
- iii. Canal Entrance
- iv. Temporary causeway

The scope of works under this package comprises of Construction, Completion, Dredging, Demolition, Beach Fill & maintain temporary facilities after handover of Main Works including remedying defects and as described elsewhere in this Request for Proposal.





QETAIFAN ISLAND NORTH AT LUSAIL PHASE 1

Linear canal, Bridges, Piling Works Package 2B Main Works

CLIENT:

M/S Qetaifan Projects LLC

CONSULTANT:

ATKINS

PROJECT DURATION:

10 Months

YEAR OF COMPLETION:

2020



MARINE WORKS



BRIEF DESCRIPTION:

Scope of Works is in three parts, one each for each Package and comprise the following:

Linear Park Canal

- Formation of the canal by excavation down to bed level (-2.5m QNHD). Canal Edges

- Soil reinforced marine wall

Abra Stations

- 3 No. Abra stations including pontoons, gangways, piles, and services as specified.

Bridges (Road bridges and foot bridges)

- Construction of the abutments of 3 No. road bridges excluding the decks

- Construction of 3 No. foot bridges with concrete abutments and steel beam deck construction.

Piling works

- Preliminary earthworks for the piling area including filling and compaction, these include the formation of a piling platform in the sea.

Total Number of Piles – 2717 Nos

Canal crossings

- Construction of 2 No. temporary canal crossings and handover to the Employer (Package 4).

Miscellaneous

- Aids to navigation including beacons at the entrances, piled daymarks at the Mangrove island, and buoys in the dredge channel.



We Work, We Deliver

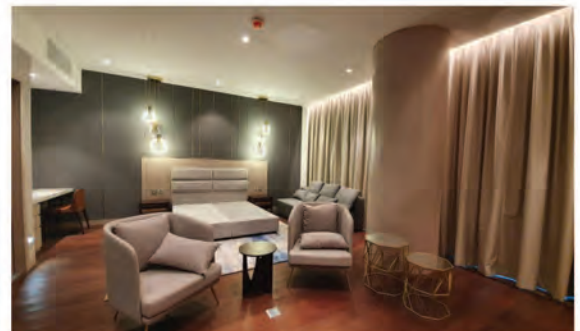


QETAIFAN ISLAND NORTH PROJECT PHASE 1- PACKAGE 5 HOTEL

CLIENT:
M/s Qetaifan Projects LLC
CONSULTANT:
Atkins
PROJECT DURATION:
18 months
YEAR OF COMPLETION:
2021



HOTELS AND MIXED USE DEVELOPMENT



BRIEF DESCRIPTION:

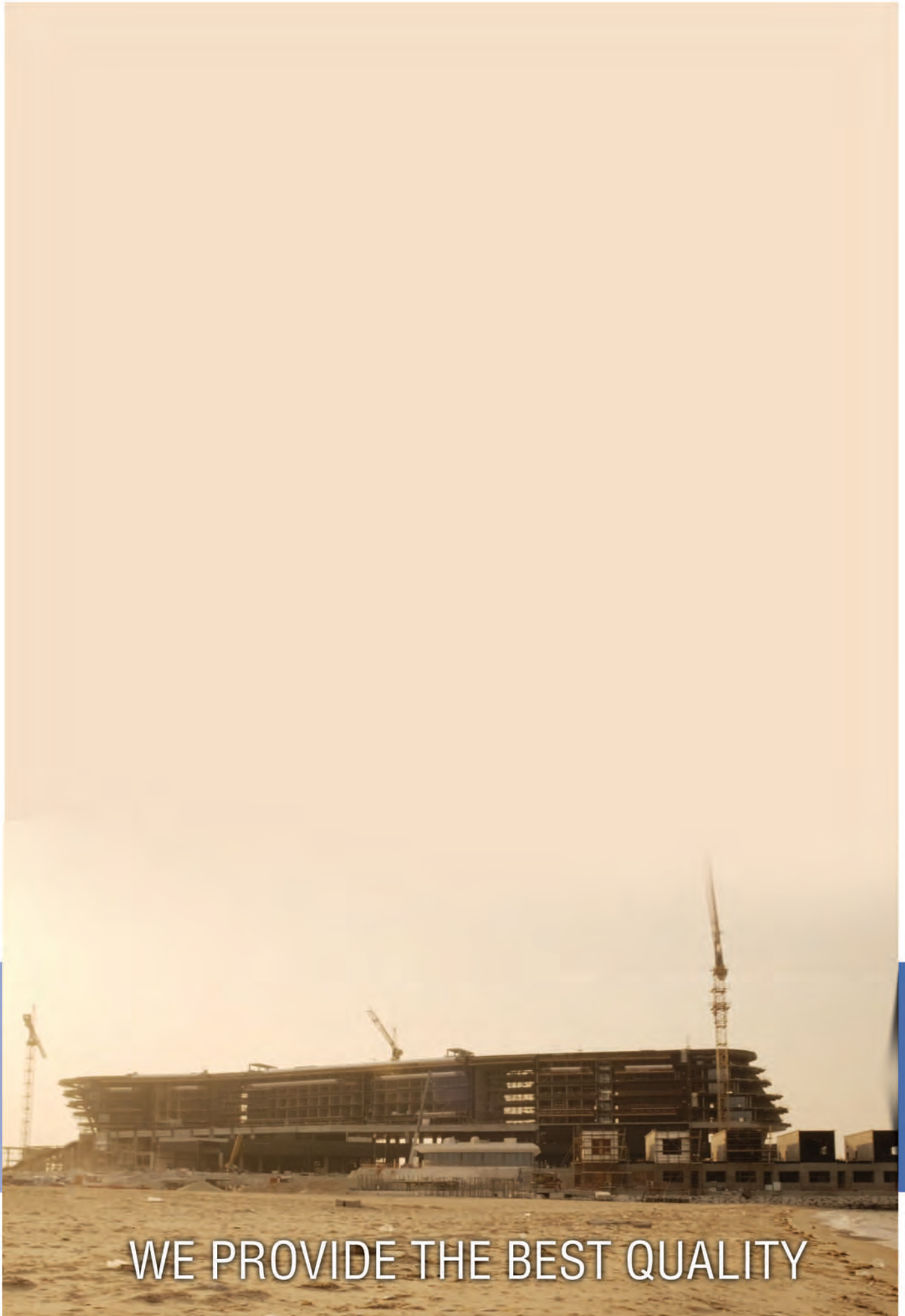
The Employer's vision is for the development of Qetaifan Island North within Lusail, Qatar.

Qetaifan Island North is a development located within Lusail City in Doha, Qatar. The development comprises of Qetaifan Island North, and Qetaifan Island South (by others but considered as part of the overall context of the development) and is generally low to medium density accommodation which embodies a strong emphasis on the landscape and emphasizes connections with its immediate marine context. It is connected to the Lusail mainland through two iconic bridges.

Qetaifan North Island, a key element of Lusail's expansion project, is a comprehensive master plan development centred around a state-of-the-art Waterpark with leisure attractions, luxurious hotels, unrivalled accommodation and world class facilities that make it a modern, globally-competitive community with a unique design that is inspired by the rich culture and nature of the region.

Qetaifan Island North Project Phase 1- Package 5 Hotel shall consist of the following:

- i. Construction of basement level for 260 car parking spaces,
- ii. central kitchen and back of house facilities.
- iii. Construction hotel, ballroom, spa, restaurants, 10 guest chalets and 350 guest rooms.
- iv. Landscaping and all external works, including pools and kids zone.
- v. Construct the internal access and service roads within the plot boundary.



WE PROVIDE THE BEST QUALITY

MIXED USE DEVELOPMENT PROJECT AT AIRPORT ROAD

CLIENT:
Sheikh Abdullah Abdulrahman Seoud Al Thani
CONSULTANT:
E.C.G.
PROJECT DURATION:
26 months
YEAR OF COMPLETION:
2019



HOTELS AND MIXED USE DEVELOPMENT

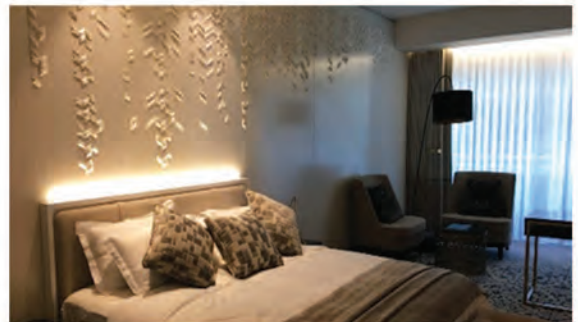


BRIEF DESCRIPTION:

Mixed-use development project at airport road with an approximate build-up area of 111,000 is multi-use iconic development consisting of two seven storey blocks in addition to the 3 basements, ground floor and a mezzanine floor; for different use consisting of a 5 star hotel, retail shopping and office spaces.

The building is very exceptional and unique due to the superior design, finishes and other specialties. The mixed use development project upon completion will be one of the landmark building in the heart of Doha City.

JTC has commenced the construction activities of the project from January 2017. Project is aiming to achieve the GORD (QSAS) requirements of 2-star rating.





LEGACY THAT OUTLASTS

Design & Build of Bin Al Sheikh Towers



HOTELS AND MIXED USE DEVELOPMENT



CLIENT:

Bin Al Sheikh Holding

CONSULTANT:

Millet International Architecture
Engineering

PROJECT DURATION:

31 months

YEAR OF COMPLETION:

2021

BRIEF DESCRIPTION:

The works comprise the design, construction and commissioning of the Bin Al Sheikh Towers with 91,697.80m² Built Up Area.

The Works shall include all construction and fit-out elements required for a fully functional and fit for purpose Apartment Building.





Somerset Apartment West Bay, Doha, Qatar



HOTELS AND MIXED USE DEVELOPMENT



CLIENT:

KATARA Hospitality

CONSULTANT:

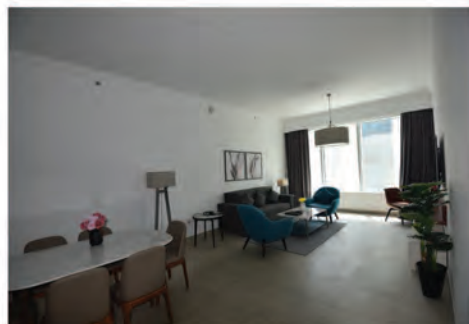
Engineering Consultant Group S.A.

PROJECT DURATION:

14 months

YEAR OF COMPLETION:

2019



BRIEF DESCRIPTION:

The works comprise of renovation along with conversion of 30 units 3-Bedroom Apartments into 60-units of 1-Bedroom Apartments and Facade replacement with a total Built Up Area of 45,124 m2.





RADISSON BLU (FORMER RAMADA) HOTEL



HOTELS AND MIXED USE DEVELOPMENT

**CLIENT:**

Ramada Hotel

CONSULTANT:

W.S. Atkins & Partners Overseas

PROJECT DURATION:

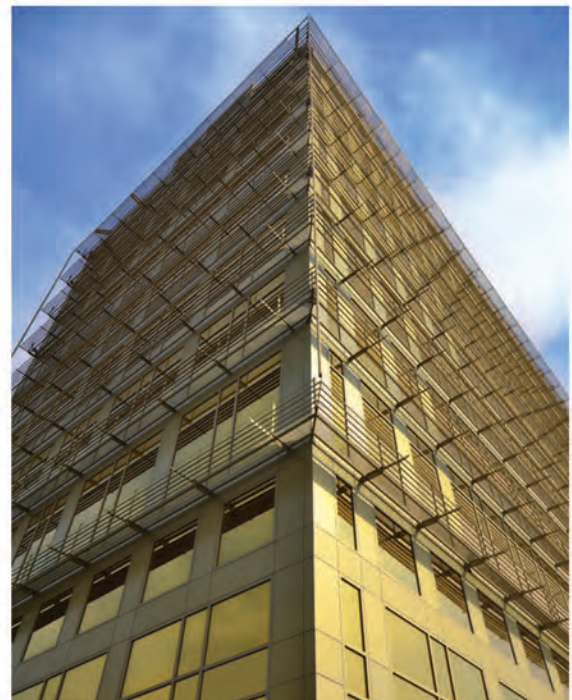
18 months

YEAR COMPLETED:

2007

BRIEF DESCRIPTION:

The works comprise of the construction completion and maintenance of a new ten storey hotel building.





JTC VISION

JTC seeks for excellence in revolutionizing the construction industry by achieving new standards of Integrated Management System and productivity that are significantly above current industry standards.

AL -SULAITI

OFFICE TOWER-2

BRIEF DESCRIPTION:

The scope of works consist of Basement, ground floor + 15 floors including all electro-mechanical works.



CLIENT:

Qatar Islamic Bank, Doha, Qatar

CONSULTANT:

GHD

PROJECT DURATION:

18 months

YEAR COMPLETED:

2004

BEVERLY

HILLS TOWERS

BRIEF DESCRIPTION:

The works comprise the construction, completion and maintenance of highrise building that consists of a basement, ground floor, first floor, club house, 26 floors, and two penthouse floors.



CLIENT:

Al Asmakh Contracting

CONSULTANT:

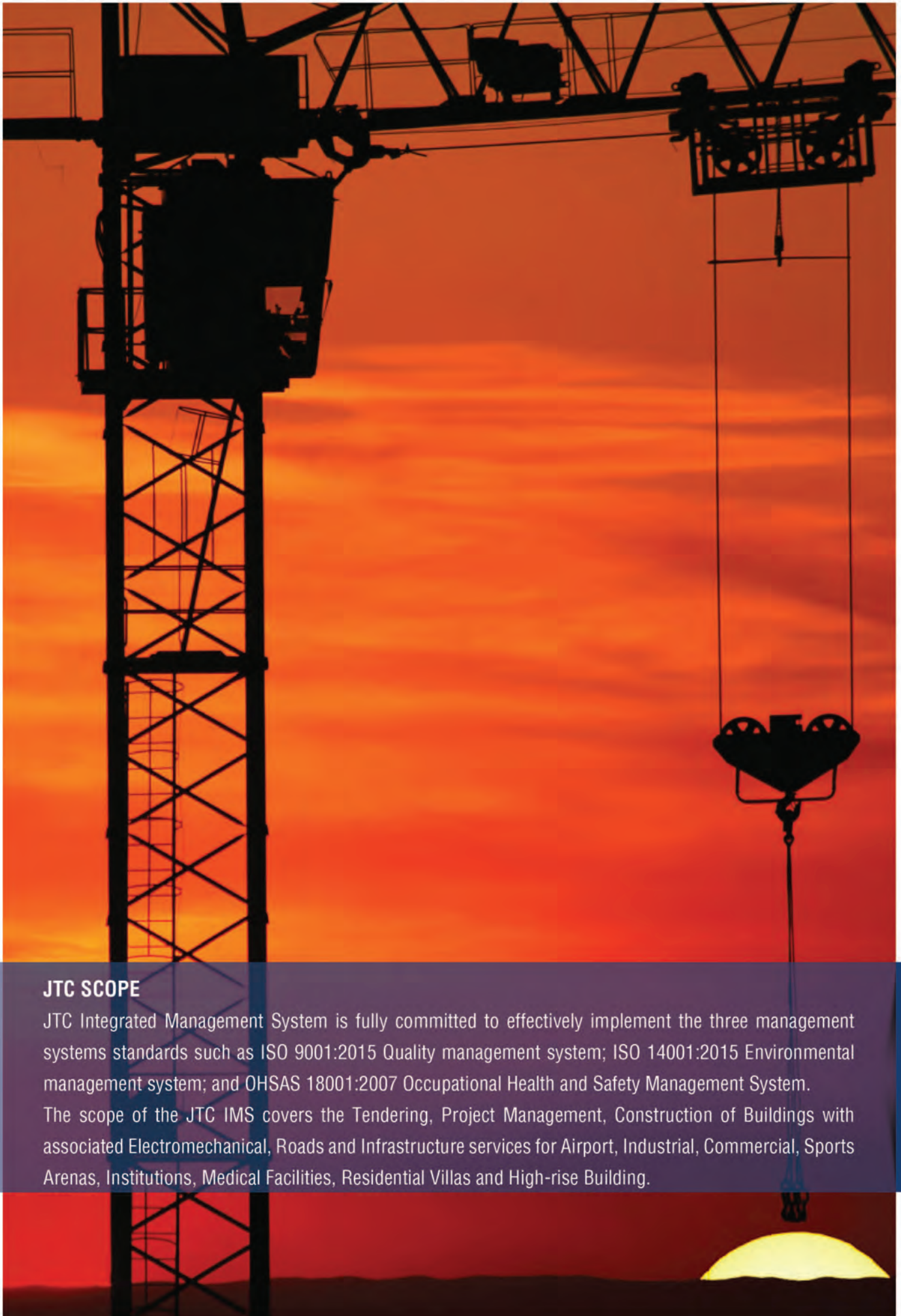
GHD

PROJECT DURATION:

20 months

YEAR COMPLETED:

2006



JTC SCOPE

JTC Integrated Management System is fully committed to effectively implement the three management systems standards such as ISO 9001:2015 Quality management system; ISO 14001:2015 Environmental management system; and OHSAS 18001:2007 Occupational Health and Safety Management System.

The scope of the JTC IMS covers the Tendering, Project Management, Construction of Buildings with associated Electromechanical, Roads and Infrastructure services for Airport, Industrial, Commercial, Sports Arenas, Institutions, Medical Facilities, Residential Villas and High-rise Building.

AL -ALAWI TOWER

BRIEF DESCRIPTION:

The works comprise the construction completion and maintenance of a nineteen storey office building (2 B+G+19) including two basements, ground floor and nineteen floors and ancillary building along with all services and other associated infrastructure facilities, external works as indicated in the drawings & project specifications.



CLIENT:

H.E. Mr. Yousef Al Alawi

CONSULTANT:

Arab Engineering Bureau

PROJECT DURATION:

20 months

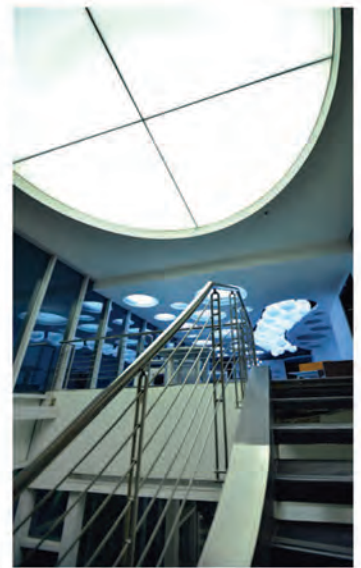
YEAR COMPLETED:

2008

QREIC TOWER

BRIEF DESCRIPTION:

The scope of works consist of completion and maintence of fourteen story Qatar Real Estate Investment Company office building which contain reinforced concrete construction 2B+G+M+14 with a total floor area 22, 330 m2, and site area 1,910 m2



CLIENT:

Qatar Real Estate Investment Co.

CONSULTANT:

KEO International Consultants

PROJECT DURATION:

18 months

YEAR COMPLETED:

2008



WE ENVISION, THEN CONSTRUCT

CONSTRUCTION OF HEALTH CENTER AL SHAMAL (PACKAGE 9)

CLIENT:
Ashghal (Public Works Authority)
CONSULTANT:
E.C.G.
PROJECT DURATION:
30 months
YEAR OF COMPLETION:
2020



MEDICAL FACILITIES PROJECTS



BRIEF DESCRIPTION:

The scope of construction contract works covers the Construction of Health Center at Al Shamal (Package 9) are as follows: –

The project comprises Administration Offices, PCWIS (Primary Centre Walk-In Service), Walk-In Clinics, Imaging, Laboratory, and a Pharmacy on ground and first floors; and ancillary buildings incorporating a mosque, watchman rooms, Guard house, Waste Holding, Service Building and Ambulance Garage.

The construction method is generally of reinforced concrete structure and blockwork with all associated finishes, services and external works with boundary wall, gates, paving works and bitumen work including car parking and all associated soft and hard landscaping etc. Light structures utilize structural steel due to its light weight and long span capability.

Contractor shall provide the necessary tie-in to the existing roads at the entrance of the Health Center including paving, curbs, etc.; and all other statutory authorities' connections to the Health Center beyond or from the boundary walls to the substations, IT/ Meter rooms etc., including information signage outside the boundary walls as required for the effective running of the facility.

Moreover, the Contractors shall consult each department of any excavation or demolition work to ascertain whether any underground installations will be affected.

All Atrium related works are to be carried out complete including but not limited to Cladding, Glass Handrail, Steel framed Skylights with operable panels with associated Services Engineering works as specified.





MAKING LANDMARKS
AS PART OF QATAR HISTORY

MESAIEED MEDICAL CENTER

CLIENT:

Qatar Real Estate Investment Co.

CONSULTANT:

Qatar Design Consortium

PROJECT DURATION:

12 months

YEAR COMPLETED:

2003

**BRIEF DESCRIPTION:**

The scope works consist of constructing a Medical Center of medium size to suit and serve the Mesaieed residents.



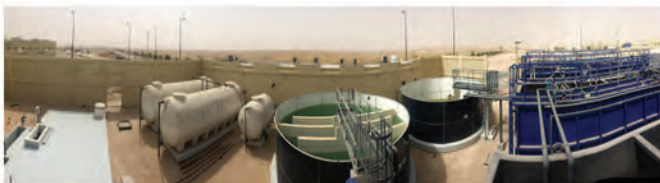


THE GREATEST WEALTH
IS
HEALTH

CONSTRUCTION OF HORSE OWNER'S COMPLEX AT AL KHOR - PHASE II



SPORTS ARENA PROJECT



BRIEF DESCRIPTION:

The Project comprises of the Horse training facility which includes training areas, support services and infrastructure.

The Development site is located on Al Shamal road in the vicinity Al- Khor. The Project involves Construction, Completion and Maintenance of the following Buildings : Horse Training Tracks, Stables, Administration Buildings, Vetinary Clinic, Swimming Pools, Groom Accommodation, Store, Horse Walkers, Substation, Horse Wash Station, Paddocks, Infrastructures, Sewage Treatment Plant, Multiple Play Courts, Parking Lots, Landscapes.

CLIENT:

Ministry of Culture and Sports

CONSULTANT:

Dar Al Handasah

PROJECT DURATION:

24 months

YEAR COMPLETED:

2017



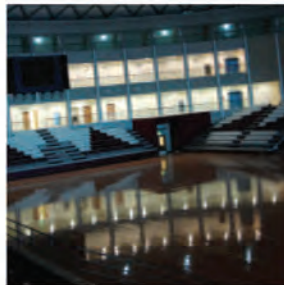
DO IT WITH PASSION OR NOT AT ALL

WOMEN'S CLUB

SPORTS HALL PACKAGE 2

BRIEF DESCRIPTION:

The project consists of skeleton construction works that consist of three areas. Main building which consists of basement and two floors with a big dome; warm up hall with a steel structural roof: and plant room which consists of two water tanks, pump room and electrical room. The concrete structure building is covered by a steel structure and an aluminum dome. It is club that provides a wide range of sports and spa facilities exclusively for women.



CLIENT:

Khalifa Sports Development Committee

CONSULTANT:

Arab Architects

PROJECT DURATION:

9 months, structure only

YEAR COMPLETED:

2005

QATAR

SPORTS CLUB PROJECT

BRIEF DESCRIPTION:

The project comprises of four multi-purpose sports training halls of the Qatar Sports Club, namely the Al Ettihad Sports Club, Al Rayyan Club, Al Wakrah Club and Al Gharafa Club which includes construction of two storey buildings structural concrete, with area 1 and 2 with an approximated total area of 5,170 sqm.



CLIENT:

Qatar National Olympic Committee

CONSULTANT:

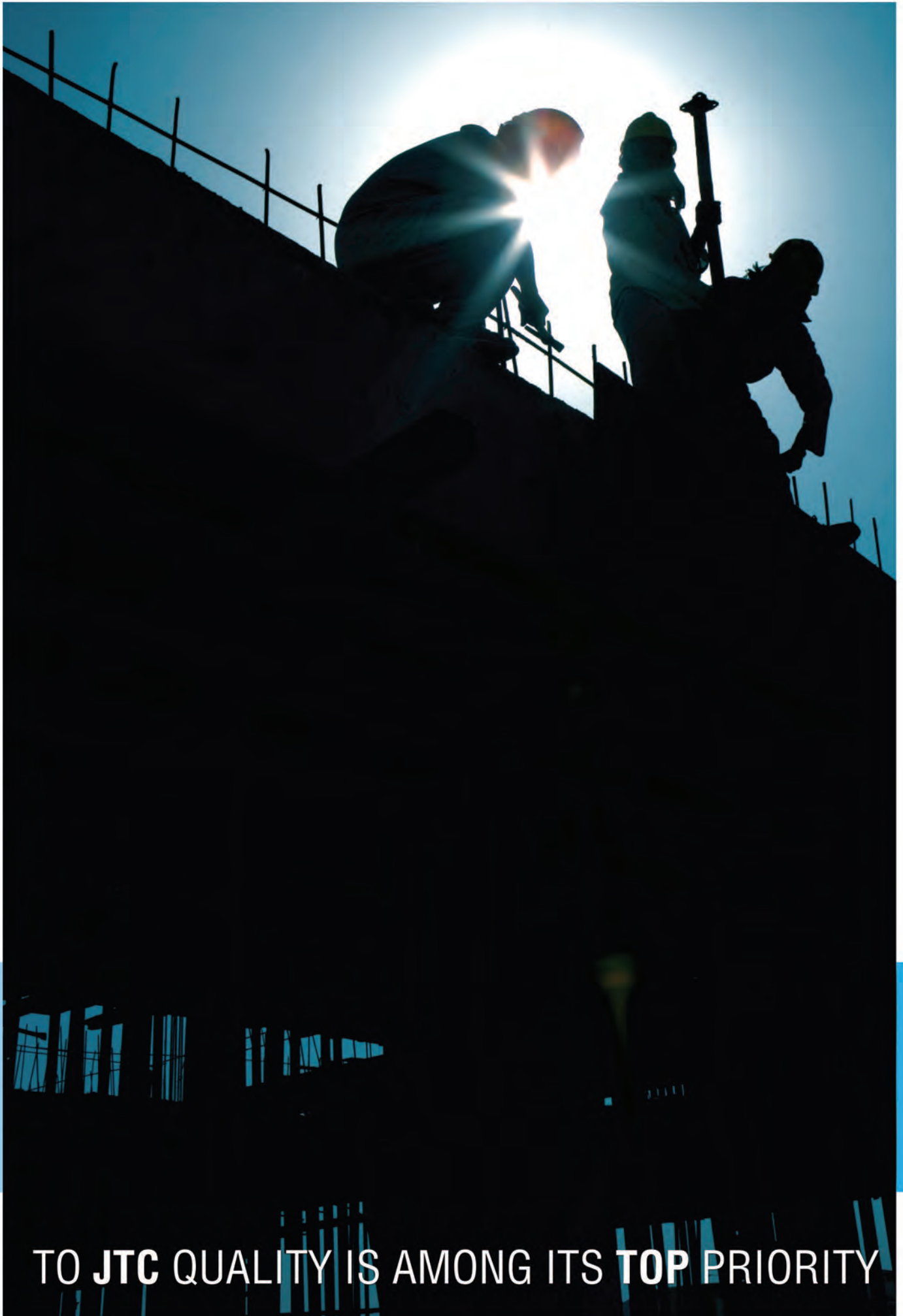
Arab Consulting Engineers

PROJECT DURATION:

18 months

YEAR COMPLETED:

2006



TO **JTC** QUALITY IS AMONG ITS **TOP** PRIORITY

BUILDING NEW EXPANSION OF HAMAD AQUATIC CENTER

BRIEF DESCRIPTION:

The works comprise the construction completion, commissioning and maintenance of a major aquatic center located at the west of Khalifa Stadium.



SPORTS ARENA PROJECTS



CLIENT:

Khalifa Sport City Development Committee

CONSULTANT:

Dar Al-Handasah / Projacs

PROJECT DURATION:

18 months

YEAR COMPLETED:

2006





JTC MISSION

JTC is in business to construct and build new infrastructure facilities from conception to delivery and beyond, provide contracting services in an ethical manner, committed to understanding and fulfilling customer requirements and needs.

CONSTRUCTION, COMPLETION & MAINTENANCE OF DUKHAN HOUSING PROJECT, PHASE IX

BRIEF DESCRIPTION:

Procurement, construction, installation, testing and commissioning of the housing facility with associated infrastructure works in an overall plot area of 172,663 m² and approximate built-up area of 61,213 m² for the following buildings in 3 Packages:

Package 1:

37 Modern Type Twin Villas each comprised with 2 Four-Bedroom Housing Units

26 Traditional Type Twin Villas each comprised with 2 Four-Bedroom Housing Units

Package 2:

6 Modern Type Twin Villas each comprised with 2 Single-Bedroom Housing Units

9 Traditional Type Twin Villas each comprised with 2 Single-Bedroom Housing Units

Package 3:

15 Apartment Blocks each comprised with 4 Three-Bedroom Housing Units

Building construction in reinforced concrete framed structure with block wall enclosures, standard fittings & finishes and MEP services.

RESIDENTIAL AND HOUSING PROJECTS



CLIENT:

Qatar Real Estate Investment Co. (QREIC)

CONSULTANT:

Iproplan Planners Co. Ltd

PROJECT DURATION:

29 months

YEAR COMPLETED:

2015





A HOUSE IS MADE OF BRICKS & BEAMS
A HOME IS MADE OF HOPES AND DREAMS

DUKHAN HOUSING PROJECT, PHASE VII (Package 1,2,3)

BRIEF DESCRIPTION:

Package 1:

- Construction of 26 nos. married senior staff bungalow
- Construction of 2 nos. water tank (Type B) & pump room
- External works
- Demolition & re-routing works

Package 2:

- Construction of 50 nos. married senior flat
- Construction of 1 no. water tank (Type B) & pump room
- Construction of 1 no. water tank (Type C) & pump room
- Construction of 25 nos. water tank yard

Package 3:

- Construction of 18 nos. building blocks
- Construction of 18 nos. shaded car parking
- Hard landscaping works
- Soft landscaping works



CLIENT:

Qatar Real Estate Investment Co. (QREIC)

CONSULTANT:

Consulting Engineering Group (CEG)

PROJECT DURATION:

24 months

YEAR COMPLETED:

2010



A photograph of a modern, multi-story residential building with a light yellow facade. The building features several windows with dark frames. A prominent green spiral staircase with a white metal railing winds around the exterior of the building. The sky is clear and blue. In the foreground, there is some construction debris and a metal pole.

**A STABLE HOME IS AT THE CENTER
OF OUR LIVES AND OUR HAPPINESS**

AL KHOR HOUSING PROJECTS PACKAGE 5

Infrastructure & Building Development—Zone 17 & 18

BRIEF DESCRIPTION:

Infrastructure Works for both zones consist of the following: Earthworks; Boundary Wall; Drainage & Service Ducts; Sub Base & Road Base;

Flexible Surfacing; Kerbs & Footways; Traffic Signs & Road Markings; QGEWC Water Works; QGEWC Electricity; Street Lighting Works; Q-Tel Works; Sewerage Works; Irrigation; Soft Landscaping; Miscellaneous External Works.

Zone 17:

- 4 bed room villa duplex — Qty: 25 — Units: 50
- Substation — Qty: 1

Zone 18:

- 4 bed room villa duplex — Qty: 25 — Units: 50
- Substation — Qty: 1



CLIENT:

Qatar Real Estate Investment Co. (QREIC)

CONSULTANT:

Qatar Design Consortium (QDC)

PROJECT DURATION:

21 months

YEAR COMPLETED:

2010





JTC BUILD DREAMS

AL KHOR HOUSING PROJECT PACKAGE 4

CLIENT:

Qatar Real Estate Investment Company

CONSULTANT:

Maunsell Consultancy Services LTD.

PROJECT DURATION:

20 months

YEAR COMPLETED:

2009



RESIDENTIAL AND HOUSING PROJECTS

**BRIEF DESCRIPTION:**

The scope of works consist of four (4) type building and infrastructure, 62 apartment buildings and 142 villas, a total of 900 flats residential unit. Complete infrastructure such as roads, water supply & irrigation system, sewage, drainage-networks, electrical, substations, telecommunication works, soft & hard landscaping, including play areas etc.

- 44 TYPE B APARTMENT BUILDINGS
- 18 TYPE D APARTMENT BUILDINGS
- 23 - TWIN SINGLE
- 48 - TWIN DOUBLE



JTC is committed to developing and improving projects that aim to a higher quality growth, focusing on how and at what condition and quality a product is to be delivered, targeting the satisfaction of all stakeholders.



MESAIEED HOUSING PROJECT

BRIEF DESCRIPTION:

The nature of the project is a construction of 262 housing unit of following types, 177-Type A, 12 - Type B, 24 - Type C, 33 - Type A, 12 - Type B, 24 - Type C, 33 - Type C1. Complete infrastructure such as roads, water supply & irrigation system, sewage & draining networks, electrical & substations, telecommunication works, soft hard landscaping, play areas etc.



RESIDENTIAL AND HOUSING PROJECTS



CLIENT:

Qatar Real Estate Investment Co.

CONSULTANT:

Maunsell Consultancy Services LTD.

PROJECT DURATION:

20 months

YEAR COMPLETED:

2008



JTC AIMS FOR GREEN BUILDING ENVIRONMENT

MESAIEED

LABOUR ACCOMMODATION PHASE 1 & 2

BRIEF DESCRIPTION:

The scope of works consist of reinforced concrete buildings associated with services and external works.



CLIENT:

Qatar Real Estate Investment Co.

CONSULTANT:

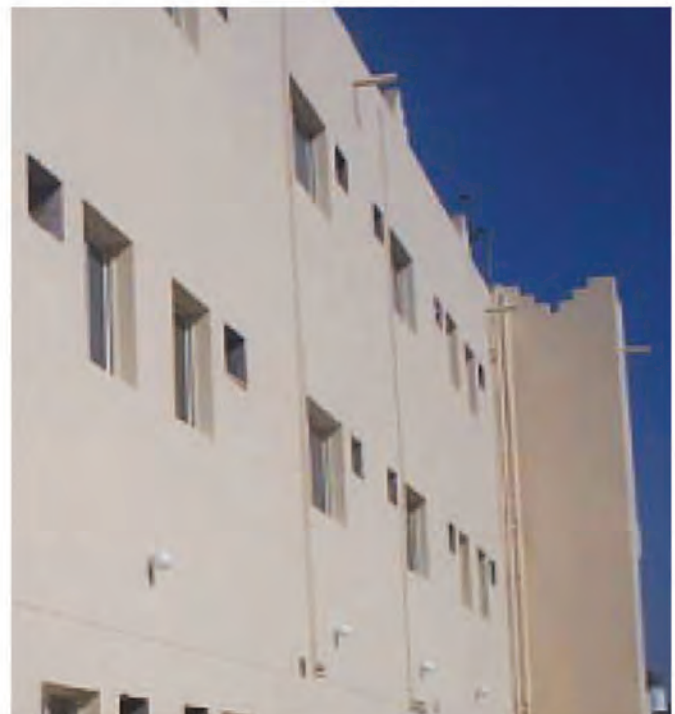
United Consultant

PROJECT DURATION:

9 months

YEAR COMPLETED:

2005





AWQAF

"MINISTRY OF AWQAF & ISLAMIC AUTHORITY" COMPOUND & OFFICE BUILDING

BRIEF DESCRIPTION:

The works comprise of constructing complete infrastructure & building of the project including the structural, architectural, mechanical, electrical works, installation and external works including roads, parking and landscape.



RESIDENTIAL AND HOUSING PROJECTS



CLIENT:

AWQAF

Qatar Islamic Bank (Real Estate Dept.)

CONSULTANT:

Consulting Engineering Group

PROJECT DURATION:

24 months

YEAR COMPLETED:

2009



WE AIM THEN ACHIEVE

RAS GAS

HOUSING PROJECTS

BRIEF DESCRIPTION:

The works comprise of (74 villas) Package 6, consisting of 45 type BC villa, 16 type B villas, 4 type A+ villas, 2 type A villas & 7 type AB villas.



RESIDENTIAL AND HOUSING PROJECTS



CLIENT:

Qatar Real Estate Investment Co.

CONSULTANT:

Dar Al Handassah & Qatar Design Consortium

PROJECT DURATION:

24 months

YEAR COMPLETED:

2002





Throughout the years, JTC became one of the very well known construction companies in the State of Qatar, honored with customer satisfaction among the wide base of local and international clients.



Design & Build of 8 Schools – First PPP Project in Qatar



BRIEF DESCRIPTION:

The Qatar school PPP development program- Package 1 consists of design, construction, maintenance, operation and handover to Authority of eight Schools in different locations across Qatar. The objective is to develop the state of art teaching facilities, which promotes the teaching abilities of the teaching staff, as well as enhance the learning capabilities of the students. It also includes providing FM services to have seamless operations throughout the duration of the project and hand back to the authority upon completion of its operations period of 25 years.

JTC is the main contractor and its scope include design and build of the eight schools with full turnkey solution. The list of schools considered for the proposal are stated below:

School	Type	Gender	Location	Area (sq.m)	Total Students*	Total Staff**
01	Secondary school	Girls	Al Wakra	25,141	786	108
02	Preparatory school	Boys	Al Khail / Rawdat Al Hamam	29,375	786	108
03	Secondary school	Girls	Umm Salal Mohammed	19,426	786	108
04	Preparatory school	Girls	Da Fereidha	27,543	786	108
05	Primary school	Girls	Al Wakra	29,717	786	108
06	Secondary school	Boys	Al Khail / Rawdat Al Hamam	38,656	786	108
07	Primary school	Boys	Al Wakra	33,885	786	108
08	Secondary school	Girls	Rawdat Al Hamam	24,680	786	108

CLIENT:

Barwa Real Estate Group

CONSULTANT:

Arab Engineering Bureau

PROJECT DURATION:

22 Months

YEAR COMPLETED:

2022



ACS Doha International School Al Kheesa Campus



EDUCATIONAL INSTITUTION PROJECTS



BRIEF DESCRIPTION:

The Project is to deliver a purpose designed premium 2,470 student school with a total floor area of roughly 27,000m², delivering education to students from pre-school to pre-university, with an age range of three years old until the age of 18.

The School Campus comprise of:

1. Main Building (GF+2) of approx. 22,750m²;
2. Sports Centre (B+GF+1) of approx. 4,600m²;
3. Substation (GF) of approx. 540m²;
4. Security Room (GF) of approx. 95m².

The school design includes dedicated staff workrooms and open plan office, parking spaces, bus parking, external play areas to meet MOEHE standards and a full-size football pitch.

CLIENT:

Al Jaber Group

CONSULTANT:

MACE Qatar (Engineer)/ CEG International (Consultant)

PROJECT DURATION:

23 Months

YEAR COMPLETED:

2020



CONSTRUCTION OF 3 NEW SCHOOLS AROUND DOHA & VILLAGES, PACKAGE 6 STAGE 9



EDUCATIONAL INSTITUTION PROJECTS



BRIEF DESCRIPTION:

The works comprises construction, completion, testing, commissioning and maintenance of (3) New Schools around Doha & Villages of 56 New Schools (Package 6, Stage 9) project.

The construction Work in each school consists of classrooms, art rooms, laboratories, library, teacher's rooms, administrative offices, assembly & multi-purpose halls, auditorium, kitchen, pantries, toilets, changing room, ancillary buildings, water tank yard, sports courts, hard & soft landscaping, shaded structures, parking, boundary walls, fence & gates, etc., including external site services infrastructures.

The project was successfully completed & obtained a final GSAS certificate of 3 stars from GORD.

CLIENT:

ASHGHAL (Public Works Authority)

CONSULTANT:

CEG International

PROJECT DURATION:

17 Months

YEAR COMPLETED:

2016



EVERY GREAT JOURNEY HAS A GREAT BEGINNING

FOUR SCHOOLS

MOHAMMED ABDUL AZIZ AL MANA SCHOOL AL ISTIKLAL
PRELIMINARY GIRLS SCHOOL OUSAMA BIN ZAID PRELIMINARY
BOYS SCHOOL AHMAD BIN HANBAL SECONDARY SCHOOL



BRIEF DESCRIPTION:

The works comprises construction, completion, testing, commissioning and maintenance of four new schools located at Lukta, New Salata, Hazm Markhia and the Old Airport. The works in each school consists, but is not limited to classrooms, art rooms, laboratories, library, teacher's rooms, administrative offices, assembly and multi-purpose halls, auditorium, canteen, kitchen, pantries, toilets, changing room, service rooms, ancillary buildings, yard, sports courts & facilities, hard and soft landscaping and external site services infrastructures.

CLIENT:

ASHGHAL (Public Works Authority)

CONSULTANT:

Construction Engineering Group

PROJECT DURATION:

28 Months

YEAR COMPLETED:

2014



**JTC AIMS QUALITY WHILE FULFILLING
CLIENT'S EXPECTATIONS**

SCHOOLS PROJECTS

AWSAJ INSTITUTE OF EDUCATION

BRIEF DESCRIPTION:

Client: Qatar Foundation
Consultant: ASTAD Project Management
Project Duration: 18 Months:
Year of Completion: 2011

Scope of Works:

- ▶ All Furniture, Fittings & Equipment (FF&E)
- ▶ All building services and utilities including but not limited to:
 - Water Installations (Fire Water, Irrigation and Potable Water)
 - Drainage and Sanitary Installations
 - HVAC Systems
 - Electrical Installations
 - Protective Installations (Earthing and Fire)
 - Fire Alarm and Detection System and Equipment
 - ELV and IT
 - A/V infrastructure
 - Building Management System
 - Security System including access control card readers and CCTV.
- ▶ Tie-in of all building services with the existing site utilities
- ▶ Tie-in with the existing roads network.
- ▶ Labor, Services, Supervision, Testing, Equipment, Tools
- ▶ Supply, Installation, Construction, Testing and Commissioning
- ▶ All architectural, civil and structural works including:
 - Earthworks
 - Substructures
 - Steel and Reinforced Concrete Superstructures
 - Hard and Soft Landscaping
 - Flooring including raised flooring
 - Ceilings & Roofing
 - Internal and External walls and partitions
 - Glazing and Curtain walls
 - Internal and External Doors, Windows, Railings
 - Sanitary Fixtures and Sanitary Appliances
 - Access roads to the FACILITY





SAFETY IS OUR PRIORITY

INTERNATIONAL SCHOOL OF CHOUEIFAT DOHA

BRIEF DESCRIPTION:

The scope of works consist of Reinforced concrete building including MEPD associated with services and external works



CLIENT:

Qatari Educational Group

CONSULTANT:

Khatib & Alami

PROJECT DURATION:

18 Months

YEAR COMPLETED:

2004



AL GHARAF ELEMENTARY SCHOOL FOR GIRLS

BRIEF DESCRIPTION:

The Works Comprise of Construction of a Substation, Guardhouse, Gardens House, Pump Room, Sports Courts, Paving, Landscaping, Shade Structures, Parking and Boundary Wall.



CLIENT:

Building Engineering Department

CONSULTANT:

GHD

PROJECT DURATION:

15 Months

YEAR COMPLETED:

2005



JTC's top priority is to protect its personnel, provide a safe working environment, and promote advance training programs for personal growth and business improvement.

MESAIEED COMMUNITY SCHOOL

CLIENT:

Qatar Real Estate Investment Co.

CONSULTANT:

Maunsell Consultancy Services LTD

PROJECT DURATION:

14 Months

YEAR COMPLETED:

2009



MESAIEED INTERNATIONAL SCHOOL

BRIEF DESCRIPTION:

The Works Comprise of Special specification and international standards. Complete building set up from infrastructure to building construction, as well as electrical mechanical, plumbing, internal, external & landscaping.



CLIENT:

Qatar Real Estate Investment Co.

CONSULTANT:

Maunsell Consultancy Services LTD

PROJECT DURATION:

14 Months

YEAR COMPLETED:

2009



BRIEF DESCRIPTION:

The Works Comprise of complete building set up from infrastructure to building construction, as well as electrical, mechanical, plumbing, internal, external & landscaping.



WE AIM, THEN WE FULFILL

Joint Forces, Coast Guard Telecom and Government Building at Ras Laffan - QP (EPIC)

BRIEF DESCRIPTION:

The Scope of Work is to carry out Engineering, Procurement, Construction, Installation, Testing, Pre-Commissioning and Commissioning to complete the Construction Works for the following three sites:

- Joint Forces Building.
- Government Building.
- Coast Guard Telecom Building.



EPIC PROJECTS



CLIENT:

Qatar Petroleum

CONSULTANT:

Qatar Petroleum

PROJECT DURATION:

40 months

YEAR COMPLETED:

2015



WE BUILD OUR CLIENT'S IMAGINATIONS

QETAIFAN ISLAND NORTH AT LUSAIL QATAR

PHASE 2 PACKAGE 8 - INFRASTRUCTURE & LANDSCAPE

CLIENT:

M/S Qetaifan Projects LLC

CONSULTANT:

M/s WS Atkins

YEAR OF COMPLETION:

2023

**BRIEF DESCRIPTION:**

The scope of Works generally comprises the engineering, procurement, construction, installation, testing, commissioning, and remedying of Defects of the Qetaifan Island North Development, Phase 2, Package 8- Infrastructure and Landscape Project in an overall plot area of 479,366 m² consisting of multiple residential parcels of land (Infrastructure, Landscape and Building works (utilities, ancillary building & community center building)), right of ways and ancillary buildings. However, the Areas pertaining to Residential plot within the QIN (Phase 2) under the scope of works are "out of scope limit" thereby leaving the net Area of scope equals to 171,079.26 m². Whereas the approximate size of additional scope of works related to Design & Build Landscape at different locations is 523,378.42 m².



Katara Towers at Lusail, Construction Package PK4D External Works & Landscape Areas



INFRASTRUCTURE AND ROAD PROJECTS



BRIEF DESCRIPTION:

The PK4D scope of work that is related mainly to buildings at sea-side for the Katara and Lusail Hotels as well as the arrival side and the second floor terraces will include the following:

Construction Package 4D Scope of Works are as follows:

(a) Architecture

- Seaside
- Arrival Side

(b) Landscape Architecture

(c) Structural Works

(d) Mechanical Services

(e) Electrical

(f) Telecom (ICT, LC, Security and Audio-Visual)

- Demarcation/interface with other packages:
- Structured Cabling and data networks
- ICT systems (IP-Telephony, Wireless Data Network, IPTV)
- Fire Alarm
- Security Systems
- Audio-visual systems

CLIENT:

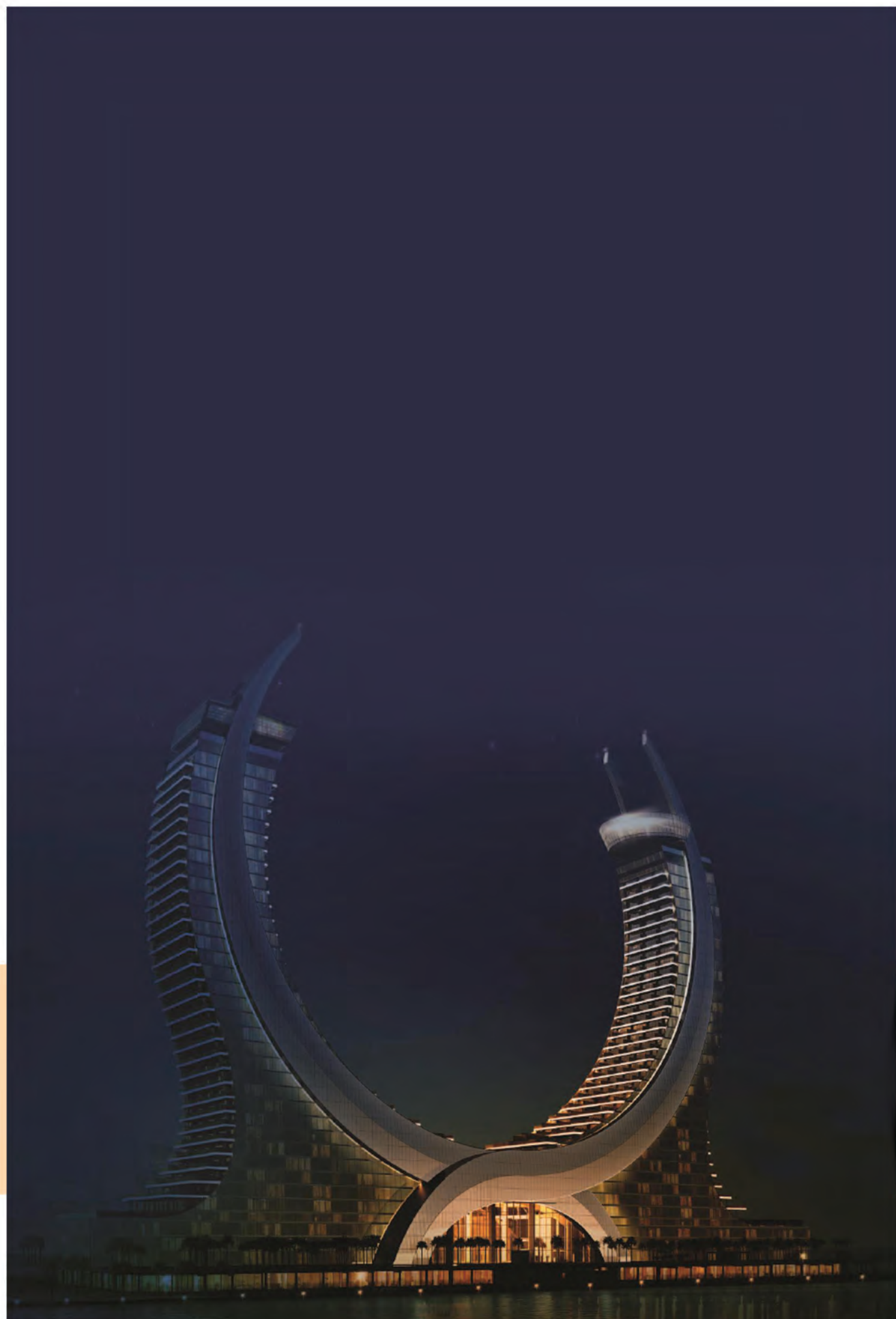
Katara Towers Hotels Management LLC

CONSULTANT:

DAR

YEAR OF COMPLETION:

2022



INFRASTRUCTURE PROJECTS AND ROAD WORKS NEW DOHA INTERNATIONAL AIRPORT

LANDSCAPING
BIKE PATH
BUS SHELTERS
& PARKING
LOT SHADE
STRUCTURES



INFRASTRUCTURE AND ROAD PROJECTS



BRIEF DESCRIPTION:

Project consists of bycle path, traffic diversions, levelling works and earthworks; bus shelters, utility cabling, parking shades; interchange and drainage compound landscaping, irrigation network, road markings, electrical and lighting works.

CLIENT:

New Doha International Airport
Steering Committee

CONSULTANT:

SALFO & Associates Ltd.
Professional Consulting Services

PROJECT DURATION:

50 Months

YEAR COMPLETED:

2014



JTC BUILD THE ART OF NATURE

INFRASTRUCTURE PROJECTS BACKFILLING, EXCAVATION & BLINDING BARWA COMMERCIAL AVENUE

ENABLING WORKS “BACKFILLING”

BRIEF DESCRIPTION:

Site clearance, removal of debris and dumped material from the commercial strip and disposal to approved offsite, Bulk backfilling works to raised plot platform between 0.5 to 0.75m compacted & levelled above the existing road.



CLIENT:

Barwa Real Estate & Investment Co.

CONSULTANT:

Maunsell Consultancy Services LTD.

PROJECT DURATION:

11 Months

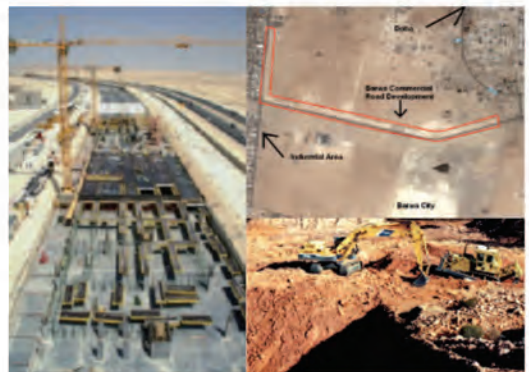
YEAR COMPLETED:

2008

EXCAVATION & BLINDING

BRIEF DESCRIPTION:

Scope of works include the breaking, loosening, excavation, loading, hauling & tipping of all materials related to defined excavation for the substructure of the underground parking spaces for the building type1, type2, type3, type4 & type5 including the placement of a blinding layer below the basement slabs & isolated basement footings.



CLIENT:

Barwa Real Estate & Investment Co.

CONSULTANT:

Maunsell Consultancy Services LTD.

PROJECT DURATION:

11 Months

YEAR COMPLETED:

2009



JTC INFRASTRUCTURE DEVELOPMENT

INFRASTRUCTURE AND ROAD WORKS

WEST BAY PROJECT

ROAD NETWORKS, PUMPSTATIONS, ELECTRICAL
WORK & SERVICE WATER

CLIENT:

ASHGHAL (Public Works Authority)

CONSULTANT:

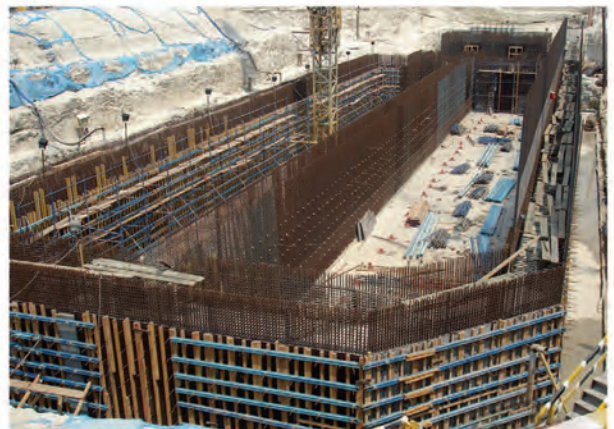
SMEC

YEAR COMPLETED:

11- Jan- 2011



INFRASTRUCTURE AND ROAD PROJECTS

**BRIEF DESCRIPTION:**

Project consists of Construction of road network and infrastructure of approximately 12.1 km of roads in the New Diplomatic Area named as Zone 66 which works include complete infrastructure such as electrical works, storm drainage, Q-Tel, service water, TSE lines, soft and hard landscaping and irrigation with advanced security elements and associated works for the Embassies including security wall, CCTV cameras, gates, fiber optic cables, road blocks, security rooms, special signage and other necessary security items. Additional works comprise 4 units—indoor substation, boundary walls, MCCC buildings and surface water pump stations.



JTC LAYS DOWN THE GROUND WORK FOR THE FUTURE CITY OF QATAR

ROAD AND EXTERNAL WORKS

CAMEL CROSSING MAIN ROAD

BRIEF DESCRIPTION:

Scope of Works, 3 Nos. of Type II Camel Crossing on Al Jemeliyah road and 2 Nos. of Type I Crossing on Dukhan road and utilities (QTel and Electrical Works)



CLIENT:

Road Department

CONSULTANT:

Khatib & Alami

PROJECT DURATION:

12 Months

YEAR COMPLETED:

2005

MESAIEED LABOUR ACCOMODATION PHASE -2

BRIEF DESCRIPTION:

Road Works & Civil Works for all utilities (Water Line, Qtel, Electricity, Irrigation & Sewer line)



CLIENT:

Qatar Real Estate Investment Company

CONSULTANT:

United Consultants

PROJECT DURATION:

12 Months

YEAR COMPLETED:

2005



RIW MUNICIPALITIES AL GHUWAIIRIYAH



BRIEF DESCRIPTION:

Asphalt works, Hard Landscaping, Road Markings, Traffic Signs and utilities (Q-Tel, Electricity, Irrigation 7 Sewer Line)

CLIENT:

Road Department

CONSULTANT:

Conser

PROJECT DURATION:

24 Months

YEAR COMPLETED:

2005



JTC LANDSCAPE AND PAVEMENT DEVELOPMENT

ROAD AND EXTERNAL WORKS

ROAD IMPROVEMENT WORKS VILLAGE ROADS - N. VILLAGES

BRIEF DESCRIPTION:

Earth Works, Asphalt works, Hard Landscaping, & Civil Works for all utilities (Water Line, Q-Tel, Electricity, Irrigation & Sewer Line)



CLIENT:

(CED) Road Department

CONSULTANT:

CED

PROJECT DURATION:

24 Months

YEAR COMPLETED:

2000

AIN KHALID - PHASE 2

BRIEF DESCRIPTION:

Earth Works, Asphalt works, Hard Landscaping, & Civil Works for all utilities (Water Line, Q-Tel, Electricity, Irrigation & Sewer Line)



CLIENT:

(CED) Road Department

CONSULTANT:

Maunsel Consultancy Services, Ltd.

PROJECT DURATION:

12 Months

YEAR COMPLETED:

2001



RIW EAST OF KHARATIYAT LINK

BRIEF DESCRIPTION:

Road Works, Asphalt works, Hard Landscaping, & Civil Works for all utilities (Waterline, Q-Tel, Electricity, Irrigation & Sewer Line)



CLIENT:

Road Department

CONSULTANT:

Conser

PROJECT DURATION:

24 Months

YEAR COMPLETED:

2004



Throughout the years of serving Qatar road and municipality affairs JTC has gained vast experience reinforced by its pioneer engineers to continually support and improve the state of Qatar's infrastructure.

HISTORICAL PALACES RESTORATION

CONSULTANT:

Arab Engineering Bureau / Davis
Langdon

CLIENT:

National Council for Culture, Art &
Heritage Abdallah Al Thani,
Historical Villa, Building Engineering
Department

PROJECT DURATION:

10 - 12 Months

YEAR COMPLETED:

2004



HISTORICAL PALACES RESTORATION PROJECTS

**BRIEF DESCRIPTION:**

Restoration of historical buildings of Al-Wakrah, Umm Salal & Al Gharafa, that reflects Qatar heritage and history.



Building your Visions, Creating Reality

PLANT MOTOR & VEHICLE DEPT. (PMV)

HEAVY FLEET EQUIPMENT AND TRUCKS

Al Jaber Trading and Contracting Co., W.L.L. utilizes state of the art Fleet such as tower cranes, hydra-crane, trucks and trailers, generators and many more under our PMV (Plant, Motor & Vehicle) Department.

The entire range of fleet we provide our projects are highly durable and give excellent performance even under harsh conditions. You can be assured that our machines are highly reliable and toughly built to deal with the most severe working conditions and give optimum productivity. This is due to our meticulous maintenance program to attain maximum efficiency of equipment required for expediting construction works.

We also have a large workshop and a superb team of specialists and certified mechanics, skilled and talented service engineers, technicians, labors and staff. All these to help ensure that our projects are completed and delivered on time and in compliance with the legal, statutory and regulatory requirements, both locally and internationally.

EQUIPMENT & PLANT DETAILS

FLEET DETAILS
EXCAVATOR
SHOVEL
UNLOADER
BACKHOE
TELEHANDLER
MOBILE CRANE
GRADER
FORKLIFT
ROLLER
DUMP TRUCKS
DUMP TRUCK HEAD
TRAILER HEAD
HIGH BED HEAD
LOWBED HEAD
SELF LOADER
WATER TANKER
WATER TANKER TRAILER
SEWAGE TANKER TRAILER
BUS (60)
BUS (26)
D.CABIN PICK - UP
D.CABIN L/C PICK - UP
S.CABIN L/C PICK - UP
PICK UP CRANE
VAN
MOTOR CYCLE
TOWER LIGHT
GENERATOR
COMPRESSOR
HAND ROLLER



PLANT MOTOR & VEHICLE DEPT. (PMV)
HEAVY FLEET EQUIPMENTS & TRUCKS



JTC is entirely committed towards serving its projects and clients with utmost care, safety and quality, satisfying JTC customers by utilising the fleet of Heavy Equipment and Trucks to ensure that projects are completed and delivered on time.



JTC STAFF ACCOMMODATION & CAMPS

JTC is providing one of the best accommodations facilities for our workforce, labors/staff in the region. Our top management is committed towards the same and believes that our workforce is the strength and backbone of the company's growth and development.

JTC has arranged best-in sector staff accommodation and camps in various locations such as Doha, Alkhor, Zikreet, Industrial Area etc... Our camps comprises of various amenities but not limited to: well maintained Gardens / Green area, Football, Volleyball & Basketball Courts, well equipped Gymnasium, Entertainment and Gathering areas, Mosque etc...

Our camp is supported by JTC worker welfare officer and security officers also facilitated with high safety equipments to ensure the proper safety parameters. In addition it is equipped with fully operational sewage treatment plants as well.

JTC STAFF ACCOMMODATION & CAMPS





JTC Camps - Empowering our Workforce

TRAINING

FOR ADVANCE, COMPETENCY AND CONTINUAL IMPROVEMENT
BUILDING LEADERS AND FUTURE PIONEERS



MANAGEMENT INTERNATIONAL
CERTIFICATION



HR MANAGEMENT OVERVIEW
IN-SERVICE TRAINING



EXTERNAL TRAININGS



QUALITY MANAGEMENT



HR TRAINING CERTIFICATIONS



NEW SYSTEM ORIENTATION



SITE SECURITY SUPERVISOR
TRAINING



SAFETY CERTIFICATION OF
SKILLED WORKERS



INTEGRATED MANAGEMENT
SYSTEM AND SAFETY



QUALITY / RISK MANAGEMENT
ORIENTATION



THE BETTER CONNECTION
PROGRAM



LEED TRAINING: GREEN BUILDING
AND CONSTRUCTION CONCEPTS
AND STRATEGIES



JTC is committed to continually improve, communicate, and review the effectiveness of its established Integrated Management System through all its department heads and employees with the intent that employees are made aware of thier individual QHSE obligations and shall be available to interested parties and company project management.

SUSTAINABILITY



SEWAGE TREATMENT PLANT FOR JTC LABOR CAMP



BEST GREEN BUILDINGS IN QATAR
IN 2016 AND 2018



LUSAIL MARINA YACHT CLUB - GSAS 4 STARS



LEED TRAINING FOR JTC EMPLOYEES BY QGBC



GSAS 3 STARS CERTIFICATES FOR SCHOOLS PROJECTS

JTC RECEIVED NO PAPER DAY
CERTIFICATE OF APPRECIATION FROM QGBC



SUSTAINABILITY IS OUR RESPONSIBILITY

CERTIFICATIONS & MEMBERSHIPS

ISO MANAGEMENT SYSTEM CERTIFICATIONS

JTC HAS DEVELOPED AN INTEGRATED MANAGEMENT SYSTEM (QHSE) THAT MEETS THE REQUIREMENTS OF:

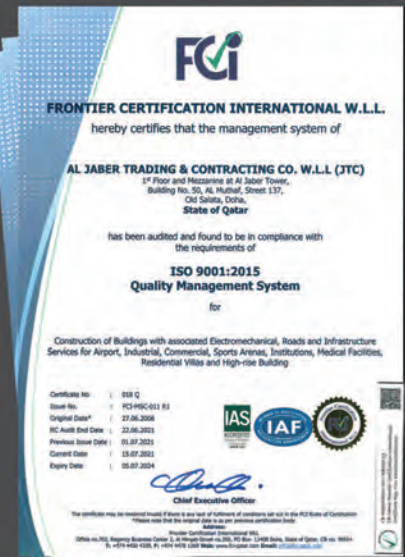
- QUALITY (ISO 9001:2015)
- HEALTH & SAFETY (OSHAS 45001:2018)
- ENVIRONMENT (14001:2015)



JTC is committed to IMS implementation

INTEGRATED MANAGEMENT SYSTEM (IMS)

JTC has implemented and maintained the ISO Certification since June 27, 2006. Since then, JTC has continually improved and renewed its commitment towards the company's Integrated Management System by achieving the high-level structure of the ISO standards - ISO 9001:2015 (Quality Management System); ISO 14001:2015 (Environmental Management System) and the OHSAS 45001:2018 (Occupational Health and Safety Management System).



JTC CERTIFICATIONS



QGBC MEMBERSHIP



True to its commitment in protecting and preserving the environment, JTC has been a member of the Qatar Green Building Council since November 2010.

CONTRACTORS CLASSIFICATION CERTIFICATE



JTC has been classified by the Qatar Tender Committee as a Class A Contractor for constructing Buildings, Maintenance, Roads, Drainage, Sewers and Water Works.

JTC strongly believes in improving its services, competence level of its employees, protection of environment, improvement in health & safety of its employees including the general public which can be achieved through the implementation of Integrated Management System Audits, Periodic Management Reviews, Risk Assessment and Relevant Data Analysis.

CLIENTS' APPRECIATIONS

Reference Letter from Qatari Diar - Marina Yacht Club



Reference Letter from Ashghal - Construction Schools



Reference Letter from Hamad Airport - Corniche Landscaping, Bike Path Bus Shelters and Parking Lot Shades Structures



Reference Letter from Al Aqaria



Certificate of Appreciation Al Shamal Municipality



Accident Free Man Hours



2016 Most Improved HSE Performance Award



Certificate of Appreciation for its contribution to Environment Day



Most Improved Contractor of the Month



One Million Hours Worked Without a Reportable Accident



Environmental Contractor of the Month





OUR CLIENTS

GOVERNMENT SECTOR CLIENTS

- * Supreme Committee for Delivery & Legacy
- * New Port Project
- * Ministry of Culture and Sports
- * Ministry of Al Awqaf & Islamic Affairs
- * Qatar Petroleum
- * Qatar Real Estate Investment Company
- * Khalifa Sports City Development Committee
- * Ashghal
- * Qatar Education City
- * Qatar National Olympic Committee
- * Qatar Islamic Bank
- * New Doha International Airport
- * Qatar Armed Forces
- * N.E.C Corporation
- * Education Institute
- * Qatar National Cement Company
- * Ministry of Housing
- * Ministry of Education
- * Barwa
- * Qatar Airways
- * Qatar University
- * Qatar Foundation

PRIVATE SECTOR CLIENTS

- * Sheikh Abdullah Abdulrahman Seoud Al Thani
- * Lusail Real Estate Development Company
- * Ghanem Al-Thani Holding Company
- * Al Asmakh Contracting
- * Barouq Trading Company
- * Sheikh Ali & Sheikh Faisal Al Ghanem
- * Mr. Saleh Al Jaber
- * Mr. Reyad Al Siddiqi
- * Mr. Fawzi Al Mahmoud
- * Mr. Khalid Saleh Al Jaber
- * Mr. Khalid A. Rashim Al Siddiqi
- * His Excellency, Mr. Yousef Al Alawi
- * Mr. Mohamed Bin Rashed Bin Rashed Al Khater
- * Mr. Khalid Abudi Hameed Al Siddiqi
- * Mr. Ali Yousef Al Jaidah
- * Sheikh Hamad Bin Faisal Al Thani
- * U.E.M.
- * Equinox



AL JABER HERITAGE AND GROWTH



OUR CUSTOMER IS OUR PRIORITY





AL JABER

TRADING & CONTRACTING COMPANY W.L.L.

Al Jaber Tower Building No. 50 Al Muthaf , Street 137 , Old Salata, P.O. Box 1120 Doha, Qatar
Website: www.jtc-qa.com Tel. No.: (+974)4409-8181 Email: info@jtc-qa.com Fax No.: (+974)4432-3168